

1390, 1391

Технические характеристики

По вопросам продаж и поддержки обращайтесь:

Алматы (7273)495-231
Архангельск (8182)63-90-72
Астрахань (8512)99-46-04
Барнаул (3852)73-04-60
Белгород (4722)40-23-64
Брянск (4832)59-03-52
Владивосток (423)249-28-31
Волгоград (844)278-03-48
Вологда (8172)26-41-59
Воронеж (473)204-51-73
Екатеринбург (343)384-55-89
Иваново (4932)77-34-06
Ижевск (3412)26-03-58
Иркутск (395)279-98-46
Россия (495)268-04-70

Казань (843)206-01-48
Калининград (4012)72-03-81
Калуга (4842)92-23-67
Кемерово (3842)65-04-62
Киров (8332)68-02-04
Краснодар (861)203-40-90
Красноярск (391)204-63-61
Курск (4712)77-13-04
Липецк (4742)52-20-81
Магнитогорск (3519)55-03-13
Москва (495)268-04-70
Мурманск (8152)59-64-93
Набережные Челны (8552)20-53-41
Нижний Новгород (831)429-08-12
Киргизия (996)312-96-26-47

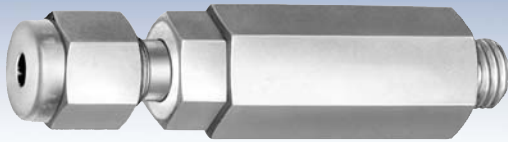
Новокузнецк (3843)20-46-81
Новосибирск (383)227-86-73
Омск (3812)21-46-40
Орел (4862)44-53-42
Оренбург (3532)37-68-04
Пенза (8412)22-31-16
Пермь (342)205-81-47
Ростов-на-Дону (863)308-18-15
Рязань (4912)46-61-64
Самара (846)206-03-16
Санкт-Петербург (812)309-46-40
Саратов (845)249-38-78
Севастополь (8692)22-31-93
Симферополь (3652)67-13-56
Казахстан (7172)727-132

Смоленск (4812)29-41-54
Сочи (862)225-72-31
Ставрополь (8652)20-65-13
Сургут (3462)77-98-35
Тверь (4822)63-31-35
Томск (3822)98-41-53
Тула (4872)74-02-29
Тюмень (3452)66-21-18
Ульяновск (8422)24-23-59
Уфа (347)229-48-12
Хабаровск (4212)92-98-04
Челябинск (351)202-03-61
Череповец (8202)49-02-64
Ярославль (4852)69-52-93

Brooks® Sintered Metal Filter

Variable Area

Brooks Sintered Metal Filters Models 1390 and 1391



Model 1390 Filter

Overview

The Brooks® Model 1390 Filter is designed to be used with Brooks flowmeters, flow controllers and NRS™ needle valves. Both male and female ends of this filter are 5/16 - 24 threads. The connection fitting supplied with the Brooks equipment is removed, the filter is screwed into its place and then the original connection fitting is attached to the female end of the filter.

Model 1391 Filter is identical to the Model 1390 except that it has a 1/8" NPT connection at the male end. It is intended for use with the standard adapter found on a Sho-Rate™ flowmeter and is screwed directly into the adapter. It may also be used in any 1/8" NPT female cavity.

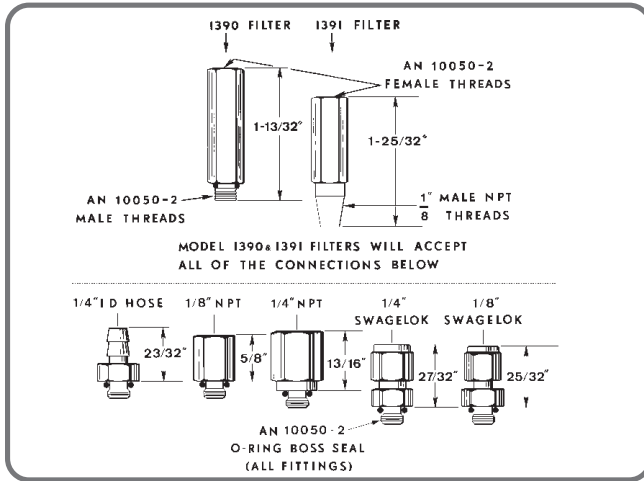
Product Features

- Convenient, in-line design
- Large filtering area
- Easy disassembly of sintered stainless steel filter element from protective housing for easy cleaning

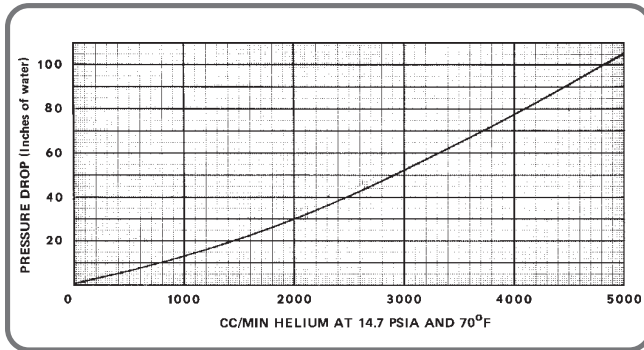
Product Specifications

Specifications	Models 1390 and 1391 Sintered Metal Filters
Maximum Operating Pressure	Aluminum Model: 2,000 psi; Stainless Steel Model: 3,000 psi
Maximum Operating Temperature	Aluminum Model: 180°F; Stainless Steel Model: 350°F
Pressure Drop and Capacity	See Pressure Drop and Capacity Graph
Connections	1390 Standard: 5/16-24 threads (male and female ends) 1391 Standard: Male end: 1/8" NPT; Female end: 5/16-24 threads 1390/1391 Optional: 1/8" or 1/4" compression; 1/8" or 1/4" female NPT; 1/4" ID hose
Materials of Construction:	
Filter Element	316L Stainless Steel (2 micron porosity)
Housing	Standard: Aluminum; Optional 316 Stainless Steel
O-Rings	Aluminum Housing: Buna-N; Stainless Steel Housing: Viton® fluoroelastomer
Spring	302 Stainless Steel

Product Dimensions



Pressure Drop and Capacity Graph



Model Code

Code Description	Code Option	Option Description
I. Base Model	1390-	Filter with 5/16-24 Male Thread - normally used with a meter
	1391-	Filter with 1/8" NPT Male Thread
II. Housing Material	1	Aluminum
	2	Stainless Steel
III. Male Connection	A	5/16-24 threads (1390 only)
	B	1/8" NPT (1391 only)
IV. Female Connection	1	5/16-24 threads (Use with Flowmeter only)
	2	1/8" Compression
	3	1/4" Compression
	4	1/8" NPT
	5	1/4" NPT
	6	1/4" ID Hose
V. O-ring Material	A	Buna-N (Aluminum only)
	B	Viton (Stainless Steel only)

Sample Standard Model Code

I	II	III	IV	V
1391-	1	B	3	A

TRADEMARKS

Brooks, NRS & Sho-Rate Brooks Instrument, LLC
 All other trademarks are the property of their respective owners.

По вопросам продаж и поддержки обращайтесь:

Алматы (7273)495-231	Казань (843)206-01-48	Новокузнецк (3843)20-46-81	Смоленск (4812)29-41-54
Архангельск (8182)63-90-72	Калининград (4012)72-03-81	Новосибирск (383)227-86-73	Сочи (862)225-72-31
Астрахань (8512)99-46-04	Калуга (4842)92-23-67	Омск (3812)21-46-40	Ставрополь (8652)20-65-13
Барнаул (3852)73-04-60	Кемерово (3842)65-04-62	Орел (4862)44-53-42	Сургут (3462)77-98-35
Белгород (4722)40-23-64	Киров (8332)68-02-04	Оренбург (3532)37-68-04	Тверь (4822)63-31-35
Брянск (4832)59-03-52	Краснодар (861)203-40-90	Пенза (8412)22-31-16	Томск (3822)98-41-53
Владивосток (423)249-28-31	Красноярск (391)204-63-61	Пермь (342)205-81-47	Тула (4872)74-02-29
Волгоград (844)278-03-48	Курск (4712)77-13-04	Ростов-на-Дону (863)308-18-15	Тюмень (3452)66-21-18
Вологда (8172)26-41-59	Липецк (4742)52-20-81	Рязань (4912)46-61-64	Ульяновск (8422)24-23-59
Воронеж (473)204-51-73	Магнитогорск (3519)55-03-13	Самара (846)206-03-16	Уфа (347)229-48-12
Екатеринбург (343)384-55-89	Москва (495)268-04-70	Санкт-Петербург (812)309-46-40	Хабаровск (4212)92-98-04
Иваново (4932)77-34-06	Мурманск (8152)59-64-93	Саратов (845)249-38-78	Челябинск (351)202-03-61
Ижевск (3412)26-03-58	Набережные Челны (8552)20-53-41	Севастополь (8692)22-31-93	Череповец (8202)49-02-64
Иркутск (395)279-98-46	Нижний Новгород (831)429-08-12	Симферополь (3652)67-13-56	Ярославль (4852)69-52-93
Россия (495)268-04-70	Киргизия (996)312-96-26-47	Казахстан (7172)727-132	