

5866RT

Технические характеристики

По вопросам продаж и поддержки обращайтесь:

Алматы (7273)495-231
Архангельск (8182)63-90-72
Астрахань (8512)99-46-04
Барнаул (3852)73-04-60
Белгород (4722)40-23-64
Брянск (4832)59-03-52
Владивосток (423)249-28-31
Волгоград (844)278-03-48
Вологда (8172)26-41-59
Воронеж (473)204-51-73
Екатеринбург (343)384-55-89
Иваново (4932)77-34-06
Ижевск (3412)26-03-58
Иркутск (395)279-98-46
Россия (495)268-04-70

Казань (843)206-01-48
Калининград (4012)72-03-81
Калуга (4842)92-23-67
Кемерово (3842)65-04-62
Киров (8332)68-02-04
Краснодар (861)203-40-90
Красноярск (391)204-63-61
Курск (4712)77-13-04
Липецк (4742)52-20-81
Магнитогорск (3519)55-03-13
Москва (495)268-04-70
Мурманск (8152)59-64-93
Набережные Челны (8552)20-53-41
Нижний Новгород (831)429-08-12
Киргизия (996)312-96-26-47

Новокузнецк (3843)20-46-81
Новосибирск (383)227-86-73
Омск (3812)21-46-40
Орел (4862)44-53-42
Оренбург (3532)37-68-04
Пенза (8412)22-31-16
Пермь (342)205-81-47
Ростов-на-Дону (863)308-18-15
Рязань (4912)46-61-64
Самара (846)206-03-16
Санкт-Петербург (812)309-46-40
Саратов (845)249-38-78
Севастополь (8692)22-31-93
Симферополь (3652)67-13-56
Казахстан (7172)727-132

Смоленск (4812)29-41-54
Сочи (862)225-72-31
Ставрополь (8652)20-65-13
Сургут (3462)77-98-35
Тверь (4822)63-31-35
Томск (3822)98-41-53
Тула (4872)74-02-29
Тюмень (3452)66-21-18
Ульяновск (8422)24-23-59
Уфа (347)229-48-12
Хабаровск (4212)92-98-04
Челябинск (351)202-03-61
Череповец (8202)49-02-64
Ярославль (4852)69-52-93



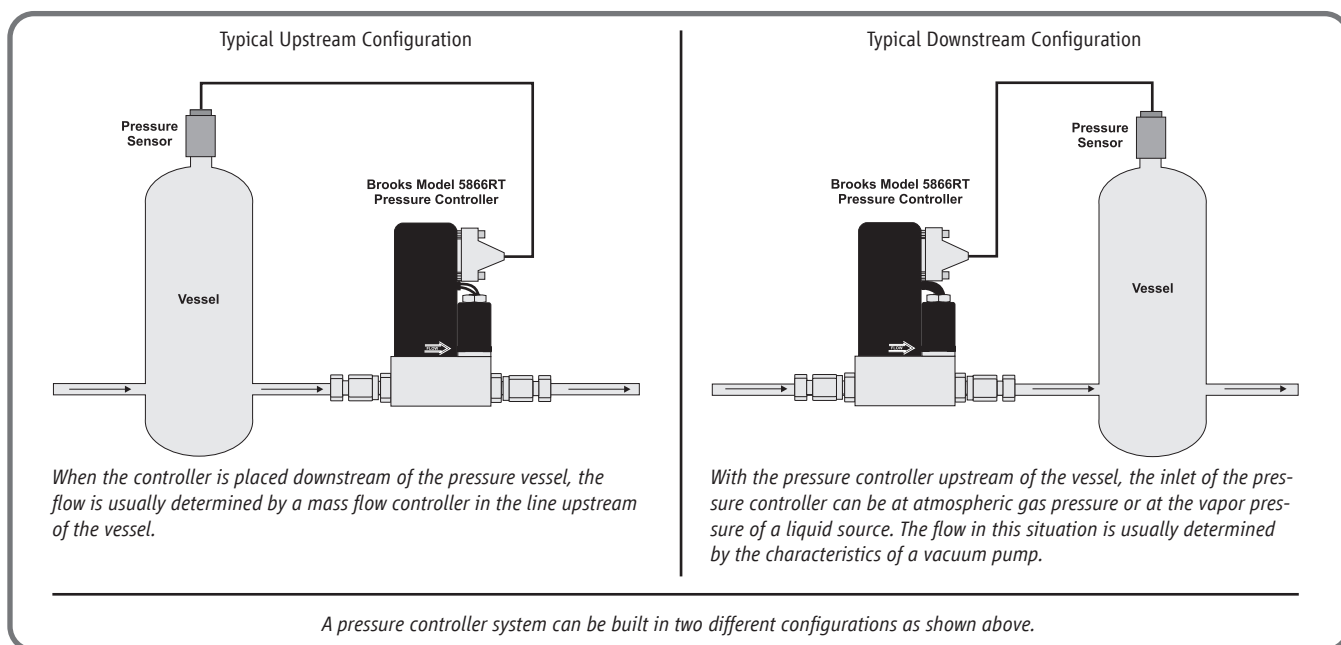
Model 5866RT Pressure Controller / Flowmeter

Model 5866RT

Elastomer or Metal Sealed, Remote Transducer Pressure Controller / Flowmeter

Model 5866RT Pressure Controller/Flowmeter controls pressure while also measuring flow rate. The Model 5866RT receives a remote pressure transducer signal, and using adjustable integral PID control electronics and control valve, will maintain a desired set pressure. In addition to the pressure control function, the Model 5866RT provides a 0-5 V signal which is linear with mass flow rate. The Model 5866RT can also be configured as a mass flow controller for calibration or test purposes.

- High accuracy
- High leak integrity
- Electropolished wetted surfaces (optional)
- Pressure control and flow measurement
- Compact design
- Wide flow measurement range
- Dynamic tuning adjustments with top mounted DIP switches
- Electrically activated valve override



Model 5866RT

PERFORMANCE	
Flow Range*	Any range from 0 to 3 sccm to 0 to 30,000 sccm N ₂ Eq.
Flow Output Signals	0-5 Vdc, max. load 1 k ohm
Flow Accuracy	±1.0% full scale including linearity at the calibration conditions. ±1.5% full scale for flow rates greater than 20 slpm
Flow Repeatability	±0.25% of rate
Flow Temperature Coefficient	0.1% full scale/°C
Pressure Ranges	Dependent upon remote transducer
Remote Pressure Sensor Input	Suitable for any pressure sensor with a 0-5 V or 0-10 V output signal
Pressure Setpoint Signal	0-5 Vdc or 0-10 V. 5 Vdc reference output available for setpoint generation. 1 k ohm maximum load
Pressure Ratings	Maximum pressure: 1500 psig
Pressure Equipment Directive (PED) 97/23/EC	Equipment falls under Sound Engineering Practice (SEP)
Pressure Control Range	100:1 for a remote transducer with a 0-10 V output
Pressure Response Time	Less than 0.8 seconds typical for a 0-100% command step with less than 2% pressure overshoot Actual pressure response depends on system design
Temperature Range	32 to 150°F (0-65°C)
Input/Output Offset	0.2% full scale
Leak Integrity, Inboard to Outboard	Elastomer Seal: 1 x 10 ⁻⁹ atm cc/sec Helium max. Metal Seal: 1 x 10 ⁻¹⁰ atm scc/sec Helium ma

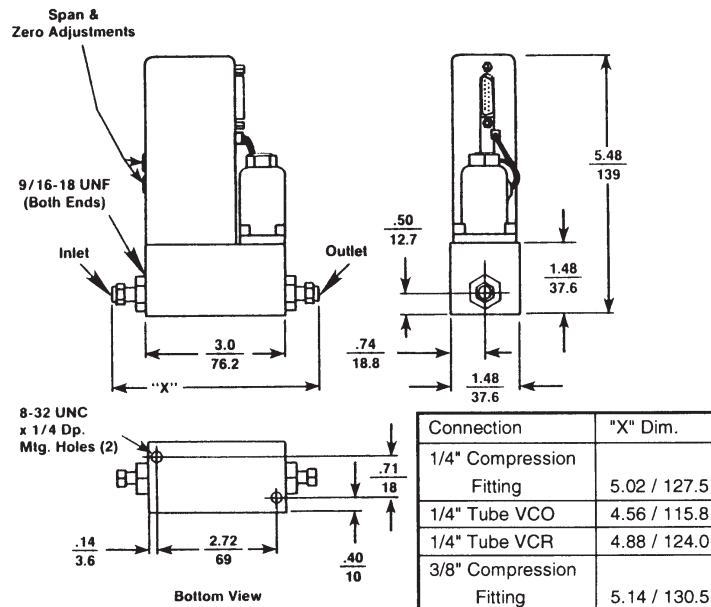
MECHANICAL	
Materials of Construction	Wetted Parts - Standard: 316L/316L VAR Stainless Steel Valve Seat - Standard: Viton® fluoroelastomers or metal External/Internal Seals: fluoroelastomers or metal; Optional: Buna-N, Teflon® or Kalrez®
Mechanical Connections	Model 5866RT Standard: 1/8" or 1/4" Stainless Steel Compression Fittings Model 5866RT Optional: 1/4" VCO™ or VCR™ Model 5866RT(M) 1/4" VCR

ELECTRICAL	
Electrical Connections	15 Pin D-Connector (DA-15P)
Power Requirements	N.C. 3.5 watts; +15 Vdc (±5%) @ 35 mA, -15 Vdc (±5%) @ 180 mA N.O. 10.5 watts; ±15 Vdc (±5%) @ 350 mA
Compliance	EMC Directive 89/336/EEC EN 61326-1

*Standard pressure and temperature in accordance with SEMI (Semiconductor Equipment and Materials Institute) standard: 0°C and 101 kPa (760 torr).

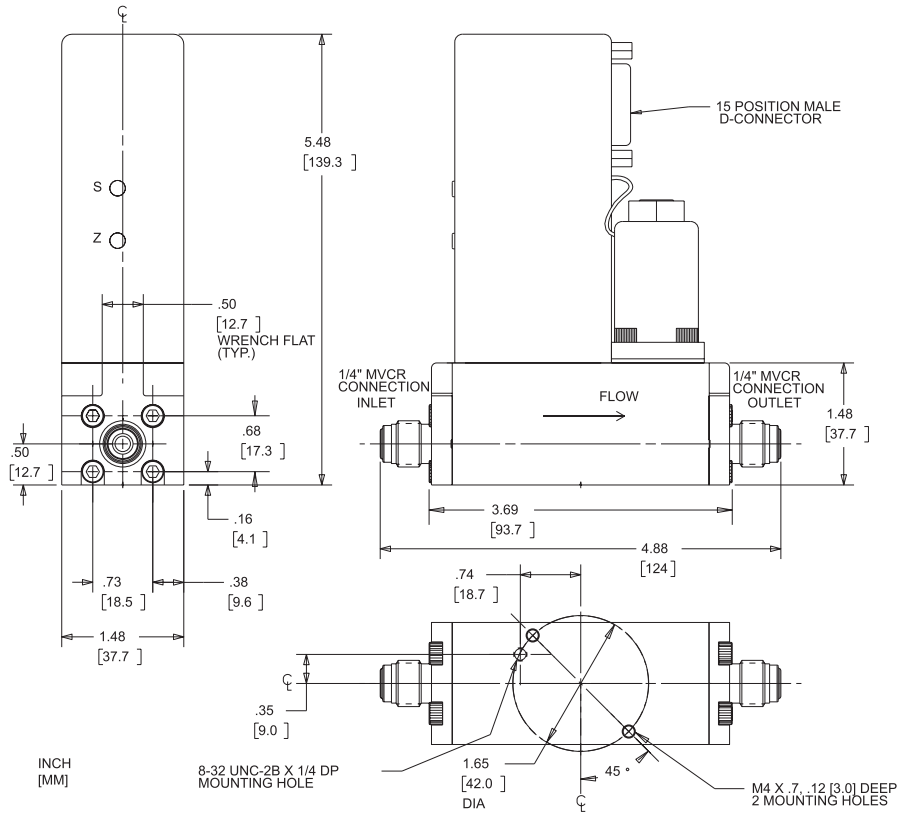
Product Dimensions

Model 5866RT
with Elastomer Seals
and D-Connector

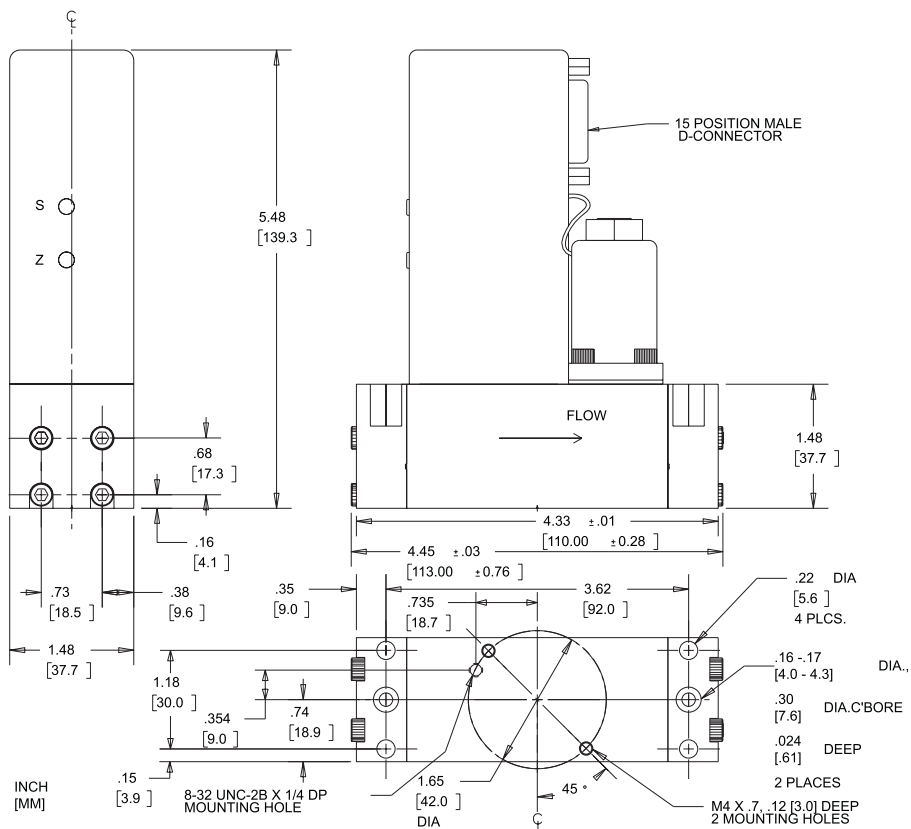


inches / millimeters

Model 5866RT Common Body with VCR and D-Connector



Model 5866RT Common Body Downport and D-Connector



По вопросам продаж и поддержки обращайтесь:

Алматы (7273)495-231	Казань (843)206-01-48	Новокузнецк (3843)20-46-81	Смоленск (4812)29-41-54
Архангельск (8182)63-90-72	Калининград (4012)72-03-81	Новосибирск (383)227-86-73	Сочи (862)225-72-31
Астрахань (8512)99-46-04	Калуга (4842)92-23-67	Омск (3812)21-46-40	Ставрополь (8652)20-65-13
Барнаул (3852)73-04-60	Кемерово (3842)65-04-62	Орел (4862)44-53-42	Сургут (3462)77-98-35
Белгород (4722)40-23-64	Киров (8332)68-02-04	Оренбург (3532)37-68-04	Тверь (4822)63-31-35
Брянск (4832)59-03-52	Краснодар (861)203-40-90	Пенза (8412)22-31-16	Томск (3822)98-41-53
Владивосток (423)249-28-31	Красноярск (391)204-63-61	Пермь (342)205-81-47	Тула (4872)74-02-29
Волгоград (844)278-03-48	Курск (4712)77-13-04	Ростов-на-Дону (863)308-18-15	Тюмень (3452)66-21-18
Вологда (8172)26-41-59	Липецк (4742)52-20-81	Рязань (4912)46-61-64	Ульяновск (8422)24-23-59
Воронеж (473)204-51-73	Магнитогорск (3519)55-03-13	Самара (846)206-03-16	Уфа (347)229-48-12
Екатеринбург (343)384-55-89	Москва (495)268-04-70	Санкт-Петербург (812)309-46-40	Хабаровск (4212)92-98-04
Иваново (4932)77-34-06	Мурманск (8152)59-64-93	Саратов (845)249-38-78	Челябинск (351)202-03-61
Ижевск (3412)26-03-58	Набережные Челны (8552)20-53-41	Севастополь (8692)22-31-93	Череповец (8202)49-02-64
Иркутск (395)279-98-46	Нижний Новгород (831)429-08-12	Симферополь (3652)67-13-56	Ярославль (4852)69-52-93
Россия (495)268-04-70	Киргизия (996)312-96-26-47	Казахстан (7172)727-132	